

# PROFILE



**CANDLE LIGHT  
MAINT & CLEANING EST.  
FOR  
PEST & TERMITE CONTROL**

Tel: 013 8817959

Fax: 011 2952854

Mob: 0508450631

E-Mail: [cce-pc@live.com](mailto:cce-pc@live.com)

Website: [www.cce-pc.com](http://www.cce-pc.com)

**Aramco Vendor Reg. Code: 10054997**

ESTABLISHED IN 2008



**COMPANY**  
**PROFILE**



### ABOUT US:

*We were established in 2008 in the Kingdom of Saudi Arabia under (SAGIA's) SAUDI ARABIAN GENERAL INVESTMENT Authority License. Candle Light Pest Control has become a renowned service provider of a wide assortment of Pest Control Services in the Kingdom. We are working to offer economical and efficacious Residential, Industrial & Commercial Pest Control Services in Saudi Arabia.*

*Before offering the services, we ensure that the services imparted are as per the client's preferences and the Kingdom & International standard norms.*

*Services rendered by us are charged very moderately. This means that they are well rendered. Our clients are of paramount importance, and offering them quality services has been our goal since our inception. That is why; we cannot afford to compromise the quality of our services. We make every effort to render our services excellent and gratify our clients.*

### Our Infrastructure:

*Infrastructure is the backbone of every organization. We also believe in the same, and thus, we are backed by well-established infrastructural facilities, which enable us to offer optimum quality Corporate Pest Control Services. Our infrastructure is fully equipped with sophisticated modern pest control equipment required to carry out our Anti Termite Service, Cockroach Control Service, Bed Bugs Control Service, Mosquito Control Service, etc., effectively. Our modern infrastructure enables us to render our services fineness, pleasing our clients. This equipment is regularly maintained and inspected by an experienced team of professionals with profound knowledge and rich domain experience.*

### Our-Team:

*The accomplishment of every organization relies on the efficiency of the workforce. We feel pleased to say that we are backed by the best and tireless crew, engaged in rendering our entire services with perfection and brilliance. We have appointed a well-experienced team of technicians, technical supervisors, etc., well-versed in their respective departments. All our employees possess years of experience in the domain, utilizing the same to offer our services successfully, making our customers' premises utterly pest-free.*





### Quality and Chemicals:

*As a quality-centric organization, we emphasize providing quality pest control services to clients. We make sure that the services offered are environmentally friendly. Our quality team stringently inspects every service provided on specific quality parameters. Some of the parameters used by us are as follows:*

- *Efficiency*
- *Environment friendliness*
- *Quality and harmless chemical*

*We have some ethical business practices and significant transparency in all dealings, making us a preferred destination among our clients. Moreover, we use superior quality products such as termite solutions, water-based solutions, and insecticides to provide effective pest control services.*

*Pesticides are environmentally among the safest & they are registered with the Environmental Protection Agency (EPA) & approved for specialized use by The World Health Organization (WHO) & The Food & Drugs Administration Authority (FDA) for utilization in public health pest control operation in Residential, Food handling area, Health care centers (Hospitals & Clinics), Hotels & other sensitive areas.*

*Pesticides or chemicals used by us are known for their higher efficacy. Our chemicals are eco-friendly and provide no harm to our clients and the environment. We offer environmentally friendly pest control services to our revered customers.*

### Why Us?

*Today, we have become one of the most well-known pest solution providers in the Kingdom. This would not have been possible without our employees' tremendous support and well-regarded customers. We serve an endless list of customers who are very satisfied with our services and always approach us whenever required. Our organization in contractual services with various govt. & public undertakings, housing societies, food industries, hospitals, hotels, schools, libraries, factories, companies, warehouses, residential premises, etc., which have fetched us a vast base of clients and compelled them to approach us again and again include:*

- *Eco-friendly pest control services*
- *Experienced professionals*
- *Competitive prices, Safe & environment-friendly chemicals & Client satisfaction.*



### ملف المؤسسة

#### مؤسسة ضوء الشموع للمقاولات

تأسست في العام 2008 بالمملكة العربية السعودية بموجب ترخيص الصادر من الهيئة العامة للاستثمار بالمملكة العربية السعودية، وقد أصبحت مؤسسة ضوء الشموع للمقاولات من أشهر مزودي الخدمة بالمملكة حيث تغطي خدماتها مجموعة واسعة من خدمة مكافحة الحشرات والأفات، وتهدف المؤسسة إلى تقديم خدمات اقتصادية وآمنة في مجال مكافحة الآفات المنزلية والصناعية والتجارية في المملكة العربية السعودية.

قبل تقديم الخدمة يتوجب ضمان تناسب المقدمة حسب رغبة العميل ووفقاً للمعايير القياسية بالمملكة العربية السعودية والمعايير الدولية، كما أن قيمة وأسعار جميع الخدمات التي نقدمها معقولة وبشكل يتناسب مع الجميع كونها أسعار معتدلة وهذا لا يعني أنها ذات جودة متواضعة، حيث أن عملائنا يتمتعون بأهمية قصوى والأمر الذي يقودنا إلى توفير خدمات عالية الجودة وهذا هو هدفنا في المقام الأول، ولهذا السبب لا نساوم في جودة خدماتنا مهما كان الأمر، بل نبذل جميع الجهود الممكنة لتقديم خدمات متميزة لتحصل على رضا وقبول عملائنا إلى أقصى درجة ممكنة.

### البنية التحتية

البنية التحتية هي العمود الفقري لكل منظومة عمل، هو ما نؤمن به في مؤسسة ضوء الشموع، وبالتالي فقد هيأت المؤسسة لعملياتها مرافق بنية تحتية راسخة ومؤهلة تمكثها من تقديم خدمات مؤسسية عالية الجودة في مجال خدمات مكافحة الآفات، حيث بنيتنا التحتية مجهزة تجهيزاً متكاملاً بمعدات حديثة ومتطورة للعمل في مكافحة الآفات والحشرات والتي تساعد في توفير وتنفيذ خدمة مكافحة النمل الأبيض، وخدمة القضاء على الصراصير، خدمة القضاء على قمل وحشرات الفراش والأثاثات، خدمة مكافحة البعوض، وغيرها من الخدمات ذات الصلة، وذلك بطريقة فعالة ومثلى، وتعمل هذه البنى التحتية الحديثة التي وضعتها مؤسسة ضوء الشموع على تقديم خدمات غاية في الدقة مما يرضي تطلعات عملائنا فوق التوقعات وأقصى ما يمكن. وتتم صيانة وفحص هذه المعدات بانتظام من قبل فريق من المهنيين ذوي الخبرة والمهارة العالية لديهم معرفة جيدة وخبرة غنية في هذا المجال.

### فريق العمل

يعتمد إنجاز العمل لدى جميع منظومات العمل على كفاءة القوى العاملة مما يسعدنا كثيراً أن نؤكد إننا مدعومون بأفضل قوى عاملة في هذا المجال والتي لا تعرف الكلل أو الملل في تنفيذ ما هو مطلوب منها، حيث تشارك في تقديم خدمات كاملة ومتكاملة وبغاية الكفاءة، لقد قمنا بتوظيف فريق من ذوي الخبرة من الفنيين حيث يشمل كل من الفنيين والمشرفين وغيرهم من الكادر المطلوب لتنفيذ المهام، حيث أثبت الفريق جدارته في إدارته المعنية، يمتلك جميع منسوبينا سنوات من الخبرة في هذا مما يقودها إلى تقديم خدمات ناجحة الأمر الذي يجعل منشآت عملائنا خالية من الآفات تماماً.





## الجودة والكيمائيات

كونها منظومة عمل تعنى بالجودة نجد أن المؤسسة تركز وبشكل كبير على الجودة في الأداء والنتيجة، بحيث تعمل على تقديم خدمات عالية الجودة لعملائها، إضافة إلى ضمان أن الخدمات المقدمة صديقة للبيئة، ويقوم فريق ضبط الجودة الخاص بالمؤسسة بفحص جميع الخدمات التي تقدمها المؤسسة من خلال معايرتها ببعض معايير الجودة المثالية، وهذه أمثلة لبعض المعلمات والمقاييس المستخدمة من قبل المؤسسة:

- الكفاءة

- صداقة البيئة.

- الكيمائيات عالية الجودة وغير الضارة.

نلتزم بأخلاق ممارسة المهنة بشكل مقيد إضافة إلى شفافية عالية في جميع أنواع التعامل الأمر الذي يجعل من مؤسسة ضوء الشموع وجهة مفضلة لدى العملاء، وعلاوة على أن المؤسسة تستخدم منتجات عالية الجودة مثل مواد مكافحة النمل الأبيض، وحلول معالجة المياه والمبيدات الحشرية لتوفير خدمة فعالة لمكافحة جميع أنواع الآفات.

المواد الكيمائية أو المبيدات الحشرية التي نستخدمها في خدمة مكافحة الآفات التي نقدمها هي وفقاً لما هو منصوص عليه في مواصفات الهيئة السعودية للمواصفات والمقاييس تحت رقم التسجيل: 179-20-772 وفقاً لمعايير منتجات الصحة العامة المسموع باستخدامها في المملكة العربية السعودية.

جميع المبيدات أو المواد الكيمائية التي نستخدمها في عملياتنا هي مواد معروفة بفعاليتها العالية، إضافة إلى أنها مواد كيمائية صديقة للبيئة ولا تسبب أي ضرر للعملاء أو البيئة، وعليه فإننا نقدم خدمة مكافحة الآفات الصديقة للبيئة وللعلماء الكرام.

## لماذا نحن!!

لقد أصبحنا الآن من أشهر مزودي حلول مكافحة الآفات في المملكة العربية السعودية، ولم يكن ذلك ليتأتى إلا من خلال الدعم الهائل من منسوبي المؤسسة إضافي إلى زبائننا الكرام، حيث نقوم بخدمة قائمة لا نهاية لها من العملاء الذين هم راضون كل الرضى عن خدماتنا ودائماً ما يلجأون إلينا كلما لزم الأمر ودعت الحاجة، الأمر الذي مكن المؤسسة من التعاقد مع هيئات حكومية مختلفة ومشروعات عامة عديدة ومجمعات إسكان ومصانع أغذية ومستشفيات وفنادق ومدارس ومكتبات ومصانع وشركات ومستودعات ومباني سكنية وغيرها من الجهات المستفيدة من الخدمة المميزة التي نوفرها، التي جلبت لنا قاعدة عملاء ضخمة وأقنعتهم على بالرجوع إلينا مرة أخرى وكلما دعت الحاجة إلى الخدمة والتي تشمل:

- خدمة مكافحة الآفات بطريقة صديقة للبيئة.

- مهنيين وفنيين ذوي خبرة عالية.

- أسعار تنافسية مرضية.

- مواد كيمائية آمنة وصديقة للبيئة.

- رضا العملاء

يرجى عدم التردد في الاتصال بنا على الأرقام: الرياض: +0966556246400 ، الخبر: +9665088450631



## **GENERAL PEST CONTROL SCOPE OF SERVICES**



**OUR MISSION:**

**“Professional service with a deep concern for  
Safety, health, environment.”**

**OUR CONCEPT:**

**“Perfect Planning & Implementation of  
Integrated pest management.”**

**OUR STAFF:**

**“Appropriate selection of well-trained & experienced  
personnel, which are suitable for the work, comply with  
safety procedures & maintain general safety awareness.”**





## **Candle Light General Pest Control Service Procedures**

### **Inspection:**

*An initial inspection of the premises, inside and outside, will be conducted to identify the type and conditions that encourage infestations and prescribe the most effective control program available for specific pests.*

### **1. CRAWLING INSECTS CONTROL:**



*A practical and specialized effective method for treating crawling insect pests such as Cockroaches, Silverfish, Beetles, Bed bugs, Lizards, Spiders, Ants, and all other known crawling insects.*

#### **1/A. DISINFESTATION TREATMENT:**

- *These services are by spraying odorless insecticide or dusting powder, and combinations of gel-based baits are used around the surroundings to protect the whole area with no risk of harmful chemicals to human life.*

#### **1/B. OUR SERVICE PROCEDURES:**

- *Inspecting the area.*
- *Identifying the pest problem.*
- *Selecting control methods based on the size and type of the pest problem.*
- *Employing effective control measures.*
- *Targeting a precise pesticide application only in areas that require treatments.*
- *Applying pesticides judiciously.*
- *Evaluating effectiveness.*
- *Call Back Service to treat reinfestation or spot treatments.*

#### **1/C. SPRAY TREATMENT:**

- *Here we use a unique insecticide, which has a flushing effect. This insecticide is sprayed on the surface of the infested area, which draws insects out of their habitats, generally crevices, holes, etc. This formulation has a knockdown effect, killing insects that come out immediately.*



**1/D. ANTI-COCKROACH & ANT'S TREATMENT: 1. Baiting Technology 2. Spray treatment**

- **Baiting technology is emerging as a reliable alternative control method that produces maximum effect against target insects and minimal impact on human activity. The salient features of this technology are No smell / Odor. They can be applied in sensitive areas such as kitchen appliances, computers, electrical control boards, record rooms, etc. This technology contains a low dosage of active ingredients.**
- **No need to leave the premises during or after the treatment. No need to empty drawers, cover food, or make special preparations before the treatment.**
- **'In a Cascading effect' - once the cockroaches have eaten the bait, they contaminate other cockroaches, thus producing a cascade of self-destruction throughout the cockroach population. This leads to quick eradication and no renovation.**

❖ **BED BUGS:**



❖ **THE ECONOMIC IMPORTANCE OF BEDBUGS**

- **Bed bugs are blood-sucking insects. They can cause several health effects, including skin rashes, psychological effects, and allergic symptoms. They are not known to transmit any pathogens.**

❖ **OUR SERVICE PROCEDURES:**

- **A high-powered steamer to destroy bugs on contact.**
- **A high-powered vacuum with a HEPA filter to suck bugs up.**
- **Applying a unique Pesticide and particular dusting powder.**



## **2. FLYING INSECTS CONTROL:**



***Flies are capable of transmitting more than 60 different serious illnesses, including Typhoid fever, Dysentery, Cholera, Anthrax, and many more. Even if the fly didn't eat on a surface that humans come into contact with, the fly might have left droppings that contain these bacteria.***

***Mosquitoes are most active around dusk and dawn. They hunt for food by detecting body heat and carbon dioxide. Unfortunately, mosquito bites not only itch and hurt but can also bring viruses and pathogens to the bite recipient.***

### **2/A. OUR SERVICE PROCEDURES:**

- ***Inspecting the area.***
- ***Identifying the pest problem.***
- ***Selecting control methods based on the size and type of the pest problem.***
- ***Employing effective control measures.***
- ***Targeting a precise pesticide application only in areas that require treatments.***
- ***Applying pesticides judiciously.***
- ***Evaluating effectiveness.***
- ***Call Back Service to treat reinfestation or spot treatments.***

### **2/B. THERMAL FOGGING**

- ***Thermal Fogging drives flying insects away from the premises.***

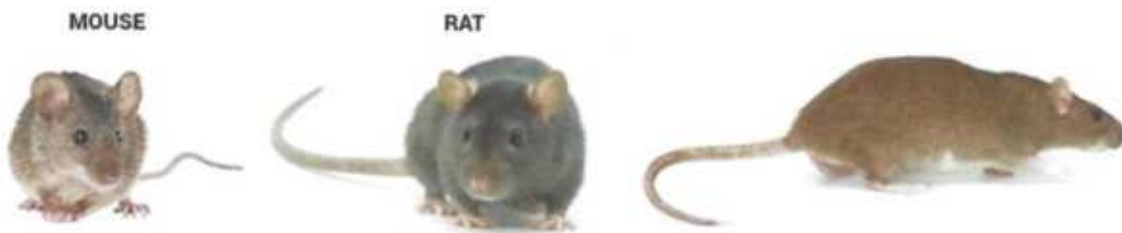
### **2/C. ULTRA-LOW-VOLUME (ULV)**

- ***The ultra-fine droplets stay airborne and enable the absorption of the active agent by the insects – either by contact or by respiration.***





### 3. Rodents Control:



- *The most common rodents are the house mouse (*Musculus*),*
- *The roof rat (*Rattus*) and*
- *The Norway rat (*Norvegicus*). Rats are nocturnal feeders.*

*Rodents such as mice and rats can carry harmful diseases. Diseases from rodents can spread to people through bite wounds, eating contaminated food or water, or breathing in germs from rodent urine or droppings stirred into the air. People can also get diseases from rodent ticks, mites, and fleas.*

#### 3/A. RODENT CONTROL SERVICES: 1. Low Toxic 2. Nontoxic

- **Low Toxic:** *Use rodenticide bait pellets outside the perimeter & grounds.*
- **Nontoxic:** *In this method, glue pads, mechanical traps, runway traps, etc., are used, which makes it entirely safe for people as well as pets.*

#### 3/B. OUR SERVICE PROCEDURES:

- *Inspecting the area.*
- *Identifying the pest problem.*
- *Selecting control methods based on the size and type of the pest problem.*
- *Employing effective control measures.*
- *Targeting a precise pesticide application only in areas that require treatments.*
- *Applying pesticides judiciously.*
- *Evaluating effectiveness.*
- *Call Back Service to treat reinfestation or presence of poisonous pests.*





#### **4. POISONOUS PEST CONTROL:**



##### **4/A. ON A NECESSARY BASIS:**

- ***Snakes, Scorpions, and other poisonous pests can be restricted using toxic pest repellants, strong insecticides, insecticide dusting powder, baits, and traps. We use the repellant buildings outside the surrounding area to last their resistance power for one month.***

##### **4/B. OUTDOOR AREAS-BUILDING OUTSIDE PERIMETER & GROUNDS:**

***Most problems that occur inside are originated from outside surrounding areas. The thorough exterior application can prevent inside difficulties. Large truck-mounted power insecticide sprayer + hand Fogger + rodent + fly baits will be used around the building to control all crawling and flying insects and rodents. For utility holes + drain lines + garbage areas + garbage drums & sewers, covers will be opened, and treatment will be done inside to eradicate pests that may enter the building through drainpipes.***

##### **4/C. OUR MONTHLY SERVICE PROCEDURES:**

- ***Inspecting the area.***
- ***Identifying the pest problem.***
- ***Selecting control methods based on the size and type of the pest problem.***
- ***Employing effective control measures.***
- ***Targeting a precise pesticide application only in areas that require treatments.***
- ***Applying pesticides judiciously.***
- ***Evaluating effectiveness.***
- ***Call Back Service to treat reinfestation or presence of poisonous pests.***



### **Indoor Premises:**

- *These premises will be treated with a gel insecticide to control crawling insects and glue boards & cages for rodents. It will be "SAFER TO PEOPLE + NO ODOR + NON-STAINING + NO VAPOR OR FUMES + NON FLAMMABLE + LONG LASTING & MORE EFFECTIVE." Drains, Sink & other insect harborages where the gel insecticide is not applicable will be treated with insecticide sprays. In addition, indoor mist spray must be used in common public areas to control flying insects.*

### **Outdoor areas-building outside perimeter & grounds:**

- *Most problems that occur inside are originated from outside surrounding areas. The thorough exterior application can prevent inside difficulties. Large truck-mounted power insecticide sprayer + hand Fogger + rodent + fly baits will be used around the building to control all crawling and flying insects and rodents. For utility holes + drain lines + garbage areas + garbage drums & sewers, covers will be opened, and treatment will be done inside to eradicate pests that may enter the building through drainpipes.*

### **Inspection and Monitoring Systems:**

- *Our trained staff will inspect your premises during the visit to monitor any new infestations and progress on control measures and carry out documentation of the status of any structural alterations, any unknown causes of infestation, control measures adopted, relocation of bait stations/traps/glue boards and replenishment of baits, re-spraying or re-treatments following your construction plans and documentary requirements.*



### **SAFETY PROCEDURES & EQUIPMENT: -**

*Service Technicians & Supervisions shall be provided with the following safety equipment.*

- ❖ *Safety Helmet.*
- ❖ *Industrial Protection Goggles.*
- ❖ *A Certified Chemical Mask.*
- ❖ *Coveralls.*
- ❖ *Chemical Resistant Gloves.*
- ❖ *Safety Boots.*
- ❖ *Signs*

### **EQUIPMENT: -**

- ❖ *A Car with a high-pressure tank.*
- ❖ *Large volume output sprays gun.*
- ❖ *Car mounted formulation tank 400 liters capacity.*
- ❖ *Hose reel (50 Meters).*
- ❖ *Personal safety items.*
- ❖ *Warning signboards.*
- ❖ *Maintenance kit.*

### **FIRST AID PROCEDURES: -**

- **Skin:** *Wash material off the skin with plenty of water and soap. Get medical attention if redness, itching, or burning sensation develops. Wash contaminated clothing and decontaminate footwear before reuse.*
- **Eyes:** *Immediately flush with plenty of water. After initial flushing, remove any contact lenses and continue flushing for at least 15 minutes. Have eyes been examined and treated by medical personnel.*
- **Ingestion:** *Wash mouth out with plenty of water. Drink water. Do not induce vomiting or administer milk or any fatty liquids. Seek immediate medical advice.*
- **Inhalation:** *Remove the person to fresh air. If not breathing, give artificial respiration, preferably mouth-to-mouth. If breathing is labored, provide oxygen, Consult medical personnel.*
- **Note to Physician:** *Inducing vomiting to remove this material from the stomach can increase the risk of chemical pneumonitis and pulmonary edema due to aspiration of stomach contents.*

### **SPILL OR LEAK PROCEDURES: -**

- *Eliminate sources of ignition and ventilate spill area. Wash skin, eyes, and respiratory protection during cleanup contain the spill. Keep out of sewers and drains. Soak up liquid with absorbent and shovel into a waste container. Cover the container and remove it from the work area.*





### **DISPOSAL:**

- *Surplus products can be diluted with water and broadcast on fallow land. Dip wash can be decomposed by adding lime. Allow 2-3 days for a complete reaction. Exclude any contamination of waterways.*
- *Empty-containing concentrate should be destroyed to prevent storing liquids for human consumption.*
- *All empty containers shall be disposed of in a sanitary landfill or by incineration or, if allowed by State and local authorities, by burning, stay out of smoke.*

### **CHEMICAL SAFETY AT SITE FOR OUR TECHNICIANS:**

- Upon reaching the site, safely keep the chemical containers in a cool place.
- No leaking containers. If a container is leaking, transfer it into another container.
- Avoid spilling.
- Do not keep the chemical containers in direct sunlight or heat. Keep away all the personnel other than your crew. Do not allow anybody to touch or smell the termiticide. If anyone wants to inspect the chemicals, inform them to have the safety dress before exposing themselves to the chemicals.
- Do not have chemicals unattended.
- Not to leave chemical containers with or without chemicals on the site.
- Do not throw empty containers on the site or in areas where children might see them.
- Bring the empty containers always back to the store for disposal.
- Do not pour the surplus termiticide left in the container into the public water system/garden or other public areas.
- Any chemical spills on vehicles or other public places should be wiped out directly. Pour enough water on such surfaces to make the feeling less toxic and wipe it out.
- While working, always keep the operation pick-up truck flash sign on to keep the public alert and away from the working site.





## **TYPES OF EQUIPMENT IN OUR OPERATIONS**



## **TYPES OF EQUIPMENT IN OUR OPERATIONS**

### **ULV Fogging machine car-mounted:**



***ULV equipment is projected to make tiny droplets, thus ensuring even coverage with low volumes & works by compressing pesticides or disinfectants through a specially designed nozzle, creating a fine cold mist or spray can.***

### **Thermal fogging Machine (Vehicle-mounted) & Hand carry fogging machine:**



***Thermal Fog Generators Foggers produce tiny dense droplets that will carry into nearly all the air space in a building; the small droplets could penetrate airspaces floating in the air for a long time. Thermal fogging is ideal for exterior use to disinfect combat vector carriers and pests, such as mosquitoes & flies. This misting method is unsuitable for applying in closed indoor spaces due to the exhaust gases they create.***



**HAND SPRAYER: (Portable)**



**VEHICLE MOUNTED HIGH-PRESSURE PUMP**



***Hand sprayer, spraying with fine mist nozzle for residual treatment. The vehicle-mounted high-pressure spray is used in large areas for disinfection and waste, yard peculiar smell elimination, sterilization, de-insectization, and epidemic prevention. A conscientious applicator will move about with a low-pressure-high, intensity type of diligence and reach all areas.***



**DOG CAGE**



**RAT CAGE**



**INDOOR MIST SPRAYER:**



*The Mist Electric Atomizer, an ultra-low volume machine, produces 22–46-micron particles that are perfect when you want to Penetrate cracks and crevices. It can be moved from room to room to fog a house and is excellent for large constructions with open spaces.*

**HAND DUSTER:**



*Insecticide dust is suitable for treating behind. Skirting boards, headboards, wall voids, attics, and crawl spaces. Essentially, any enclosed area is harborage or a travel route for crawling pests.*





**ELECTRIC DUSTER:**

*This duster is for treating large spaces with Horizontal and vertical surfaces with a covering of debris. Is. The larger tank can hold enough dust to treat attics and crawl spaces without refilling.*



**CERTIFICATION OF PESTICIDE SAFETY**

*This is to certify that all pesticides & materials used in our professional Disinfectant & Pest control service are; Low Toxicity & odorless or with acceptable odor, nonflammable, no straining, non-corrosive and harmless to humans, domestic animals, green plants, and all decorative materials.*

*These pesticides are environmentally among the safest & they are registered with the Environmental Protection Agency (EPA) & approved for specialized use by The World Health Organization (WHO) & The Food & Drugs Administration Authority (FDA) for utilization in public health pest control operation in Residential, Food handling area, Health care centers (Hospitals & Clinics), Hotels & other sensitive areas.*

*Best Regards,*

*Candle Light Pest & Termite Control,  
Customers Safety & Technical Department.*



**OUR MAJOR CLIENT'S REFERENCE**



## OUR MAJOR CLIENTS REFERENCE

- 1 [Saudi Oger-Projects](#)  
Prince Norah University-Project  
Security & Protection Uint Force-Project  
King Abdulla Financial District-Project  
New NAJD School-Projects  
N.B.A Private Residence-Project  
Al Samriyah Farm, Phase-2-Project
- 2 [Contracting & Construction Ent.](#)  
SCECO PP 10, C&ITC-Project  
C&CITC Main Building Project.  
C&ITC Convention Hotel Project.  
Al Rajhi Head Quarters Building Project  
KAJD-Tadawul-Project
- 3 [Saudi Arabian Saipem Ltd](#)  
KCC Aramco Project Camp  
Dammam Aramco Camp.  
Dharan Aramco Camp.  
Manifa Aramco Project Camp
- 4 [Dar Al Azyz Trading & Corp.](#)  
Citymax showroom Project
- 5 [Al Bandar International Trading](#)  
City Plaza Project
- 6 [Ahmed Zaki & Resources.](#)  
King Faisal Colleague Project
- 7 [Dar Al Swaikan Contraction](#)  
8 Villas Project
- 8 [Dar jana Group](#)  
80 Villas Compound Project
- 9 [Shabbad Contraction](#)  
40 Villas Compound Project
- 10 [Landmark Group.](#)  
All Centrepoint Showrooms in Riyadh  
All Homecentre Showrooms In Riyadh  
All Iconic Showrooms in Riyadh-Hail  
Citymax showrooms  
All Al Bandar Warehouses
- 11 [Sinopec](#)  
20 Sino Rigs
- 12 [Daqing Saudi Arabia Ltd.](#)  
4 DQ Rigs
- 13 [Radisson Hotel](#)  
Complete Hotel & facilities
- 14 [Suedrohrbau S.A. Ltd.](#)  
Saudi Aramco Project Camp
- 15 [Energy & Power Contracting Co. Ltd.](#)  
EPC-PS#-3, PS#-6 & PS-10 - Aramco project Camps
- 16 [Saipem Taqa Al Rushaid Fabricators Co. Ltd.](#)  
Saudi Aramco Offices, Warehouse  
Fabrication Yard Facilities
- 17 [Archirodon El Seif Consotium](#)  
Tanajib Saudi Aramco Facilities
- 18 [Babcock Borsig Service Arabia Ltd.](#)  
Juaymah Power Plant Camp  
Qurayah Power Plant Camp  
Ghazlan Power Plant Camp
- 19 [Al Bawani Construction Company](#)  
Abdulilah BinAbdulaziz Palace.
- 20 [HRH Prince Turkey Bin Nasser Bin Abdulaziz Palace Exit-2](#)
- 21 [Intercontinental Hotel Corporation](#)  
Complete Hotel & facilities
- 22 [National Company for Sulphur Product.](#)  
Warehouse & Office
- 23 [Babcock Borsig Service Arabia Ltd.](#)  
Juaymah Power Plant Camp  
Qurayah Power Plant Camp  
Ghazlan Power Plant Camp
- 24 [ENSCO](#)  
7 Offshore Rigs
- 25 [National Company for Sulphur Product.](#)  
Warehouse & Office
- 26 [Al Hoshani Plastic Co.](#)  
Plastic Production Factory & Office
- 27 [Kanooz Contracting Est.](#)  
Office, Warehouse & Camp
- 28 [Masah Specialized Construction Co.](#)  
Dr. Sulaiman Al Habib Palace Project
- 29 [Creet International Cont. Co. Ltd.](#)  
KKIA-Air Freight Terminal Project  
Agility 3 Warehouse Project
- 30 [Mada'in Co. Ltd.](#)  
AL Asalah Housing Project
- 31 [Al Mabda Contracting Company](#)  
National Housing Project-Al Mashriqia.





- 32 COSL Drilling Saudi Ltd.
- 33 Saeed Ghodran Group
- 34 Tekfen Construction & Installation Co.
- 35 United Catering Co.
- 36 Eram Contracting Co.
- 37 Al Shalawi Est.
- 38 Al Waha Garden Village Compound Riyadh
- 39 LG Shaker Co. Ltd.
- 40 Emtayz Catering Company
- 41 Wurth Saudi Arabia LLC
- 42 Yuksel Insaat A.S.
- 43 Nesma & Partners Contracting Co. Ltd.
- 44 First Period Company
- 45 Al Salamah Contracting Co.
- 46 Abdellah Ali al Salamah Real Estate Office
- 47 Abdullah Ibrahim Al Shaalan Est.
- 48 Abdul Majeed Saleh Al Mandeel
- 49 Ahmed Abduljalil Alelewie Trading Est.
- 50 Al Babtain Leblanc
- 51 Al Hayat National Schools Co. Ltd.
- 52 Al Jabreen Trading & Cont. Co.
- 53 Al Jabr Holding
- 54 Al Khodari Co. Ltd.
- 55 Al Kifha Contracting Company
- 56 Al Saad General Contracting Co. Ltd.
- 57 Al Manar Arabian Corp.
- 58 Al Robayb Est. for Cont.
- 59 Al Mashfa Health Center
- 60 Alomar Furniture Trading Co.
- 61 Al Rajhi Specialist Company
- 62 Al Rashid Tyres Co.
- 63 Al Yemni Motor Company
- 64 Arkan Overseas Company LLC
- 65 Arnaout Contracting Company
- 66 Asmael General Contracting
- 67 Branch of Sinohydro Corporation Ltd.
- 68 Building specialized Contracting Co.
- 69 Creet International Cont. Co. Ltd.
- 70 Dafadef Trading Group
- 71 Daily Food Company
- 72 Dar Al Azaya Int'l
- 73 DCC International
- 74 Eastern Trading & Contracting Company
- 75 Elmexal Arabia Company
- 76 Emtayz Catering Company
- 77 Fatayerji Trading & Contracting Co.
- 78 Flexible Building
- 79 Golden Side Trading Company
- 80 Hanbo Engineering & Construction Co. Ltd.
- 81 Handle Logistic For Event
- 82 Heet Metal Factory
- 83 Hidada Contracting Co. Ltd.
- 84 Honeywell Arabia Ltd.
- 85 Al Samriyah Farm
- 86 Arnon Plastic
- 87 Kaefer Saudi Arabia Co.
- 88 Khamis Al Sharjah Cont. Est.
- 89 Larsen & Toubro SA
- 90 LE Premier Architects Eng. Cont. Co.
- 91 Limaar Contracting Co.
- 92 Mas Powermech Arabia
- 93 Mastoura for Contracting Co. Ltd.
- 94 Meed Trading Company
- 95 Modern Exhibition Art Concept Co.
- 96 More Care International Co.
- 97 National Sulphur Co. Limited
- 98 Nesma Joint Venture
- 99 Oasia Express Logistics Service Est.
- 100 Omer Suleiman Al Abdullatif Real Estate Office
- 101 Operation Allience OPS Co.
- 102 Orbit Development Contracting Co.
- 103 Oscar Furniture
- 104 Overseas Cont. Co.
- 105 Puli Mahesh Lunch Home
- 106 Qudurat Media Company
- 107 Quwat Al Tatweer Est.
- 108 Ram Dental Care
- 109 Rare & Basic Showroom Riyadh
- 110 Saleh Hussein Salem Al Salama Company
- 111 Saudi Amana Contracting Co. L.L.C.- K.S.A
- 112 Saudi Archirodon Ltd.
- 113 Saudi House Department Store
- 114 Takween Company
- 115 Saudi Specialize Ind. Serv.
- 116 Saudi Swiss Consultant
- 117 Sedres Maritime Co. Ltd.
- 118 Specialized Liposuction Int'l Med. Co.
- 119 Speed Business Achievement Suppling Est.
- 120 Star Specialty Company
- 121 Steel Pioneers Factory

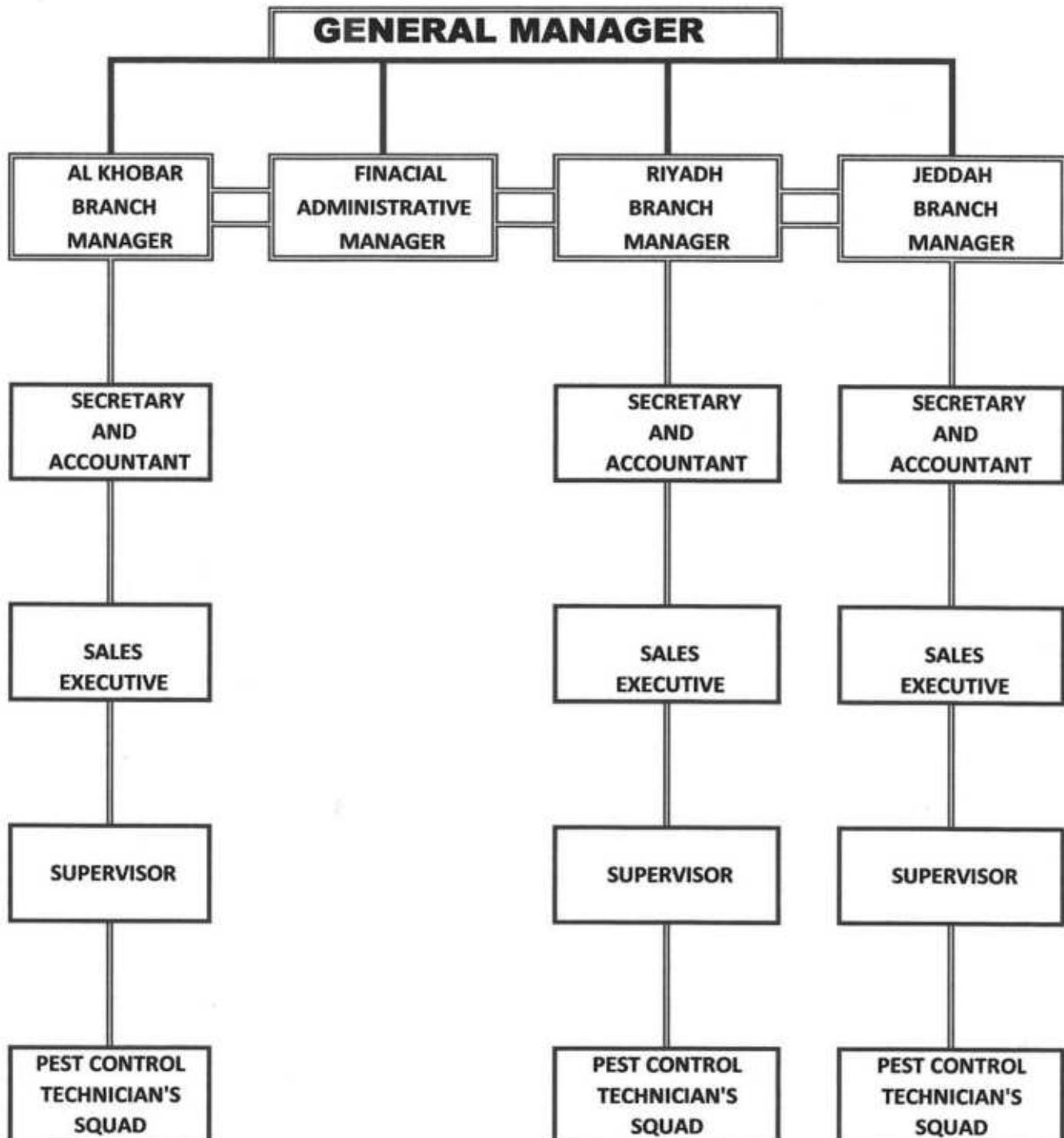




- 122 Watania Steel
- 123 Zakher Marine Intel. Inc.
- 124 EL Seif Engineering Contracting Company
- 125 Ministry of Agriculture Al Salamah Co. Ltd.
- 126 Quwat Al Tatweer Est.
- 127 Khalid Al Ateek Cont. Est.
- 128 Al Metrek Medical Company
- 129 Sudair Factory Furniture
- 130 ZP Arabia Drilling Company Ltd.
- 131 Flavour of India Hotel
- 132 Alaa Industrial Equip. Co.
- 133 Emaar Housing Construction Co.
- 134 Al Amal Est.
- 135 Al Hoshani Plastic Co.
- 136 Snamprogetti Saudi Arabia Co. Ltd.
- 137 AES Arabia Ltd.
- 138 Al sharif Group & KEC Ltd.
- 139 Limaar Contracting Co.
- 140 Abaad Cont. Est.
- 141 Ahmed N. Al Binali & Sons Co.
- 142 Energy & Power Contracting Co. Ltd.
- 143 Al Robaya Est. for Cont.
- 144 Sondos
- 145 Arabian Gulf Constriction
- 146 Zamil Operations & Maintenance Co. Ltd.
- 147 Delmon Company Ltd.
- 148 Doosan Heavy Industries & Construction Co. Ltd.
- 149 Almajwal Group
- 150 Dar Al Azya Trading & Corp.
- 151 Al Bawani Co. Ltd.
- 152 Nintynine Furniture Showroom
- 153 Shams Mohsen Al-Marzouq Est.
- 154 Elight Furniture Showroom & Warehouse
- 156 Al Jabar Automotive (KIA)
- 157 Bupa Arabia Head Office Riyadh
- 158 Fitness First Company Ltd.
- 159 Shahad Alsharra Trading
- 160 Al Jabr Trading Co.
- 161 Atheeb Maintenance & Services Co.
- 162 Saudi Arabian Ductile Iron Pipes Co. Ltd.
- 163 Fahad Tanayyan Al Thanayyan & Partners
- 164 Compass Arabia Ltd.
- 165 The International Electrical Products Co.
- 166 Catering International & Services Arabia
- 167 National Factory for Processing & Treating Minerals
- 168 Ketteneh-Qassim Combined Power Plant Project
- 169 Al Abullatif Industrial Company
- 170 Arnon Plastic Factory
- 171 Al Rawabi Trading.
- 172 Middle East Development Company
- 173 HRH Nayyara Banquet Hall



**ORGANIZATION CHART:**





Proof Number 1012157533 رقم الإثبات  
Original Date 4/1/2022 تاريخ الإصدار  
Expiration Date 7/3/2022 تاريخ الانتهاء

العنوان الوطني  
NATIONAL ADDRESS



## إثبات عنوان Address Proof

### Address Holder Details

### بيانات صاحب العنوان

Name الاسم مؤسسة ضوء الشموع للصيانة والنظافة  
Customer Acc. رقم الحساب 1 1 5 3 1 3 3 7 1  
Reg. Date تاريخ التسجيل 29/9/2012

### Address Details

### تفاصيل العنوان

Short Address العنوان المختصر E K J B 7 9 5 2  
Building No. رقم المبنى 7 9 5 2  
Street الشارع طريق الملك عبدالعزيز  
Secondary No. الرقم الفرعي 4 8 5 3  
District الحي حي مدينة العمال  
Postal Code الرمز البريدي 3 4 4 4 1  
City المدينة AL KHOBAR الخبر  
Kingdom of Saudi Arabia المملكة العربية السعودية



للتحقق To Verify

<https://portal.address.gov.sa/verifyProofN44page>

تم إصدار هذا الإثبات إلكترونياً ولا يتطلب التوقيع عليه

تم إصدار هذا الإثبات بناءً على طلب الموضح أعلاه، ويحظر قطعياً نقله أو إدخال أي تعديلات عليه سواء بالإضافة أو الحذف، وبعد الإثبات لنغيا إذا شابه شيء من ذلك، كما يعرض صاحبه للمسائلة القانونية.

This proof has been issued electronically and does not require a signature

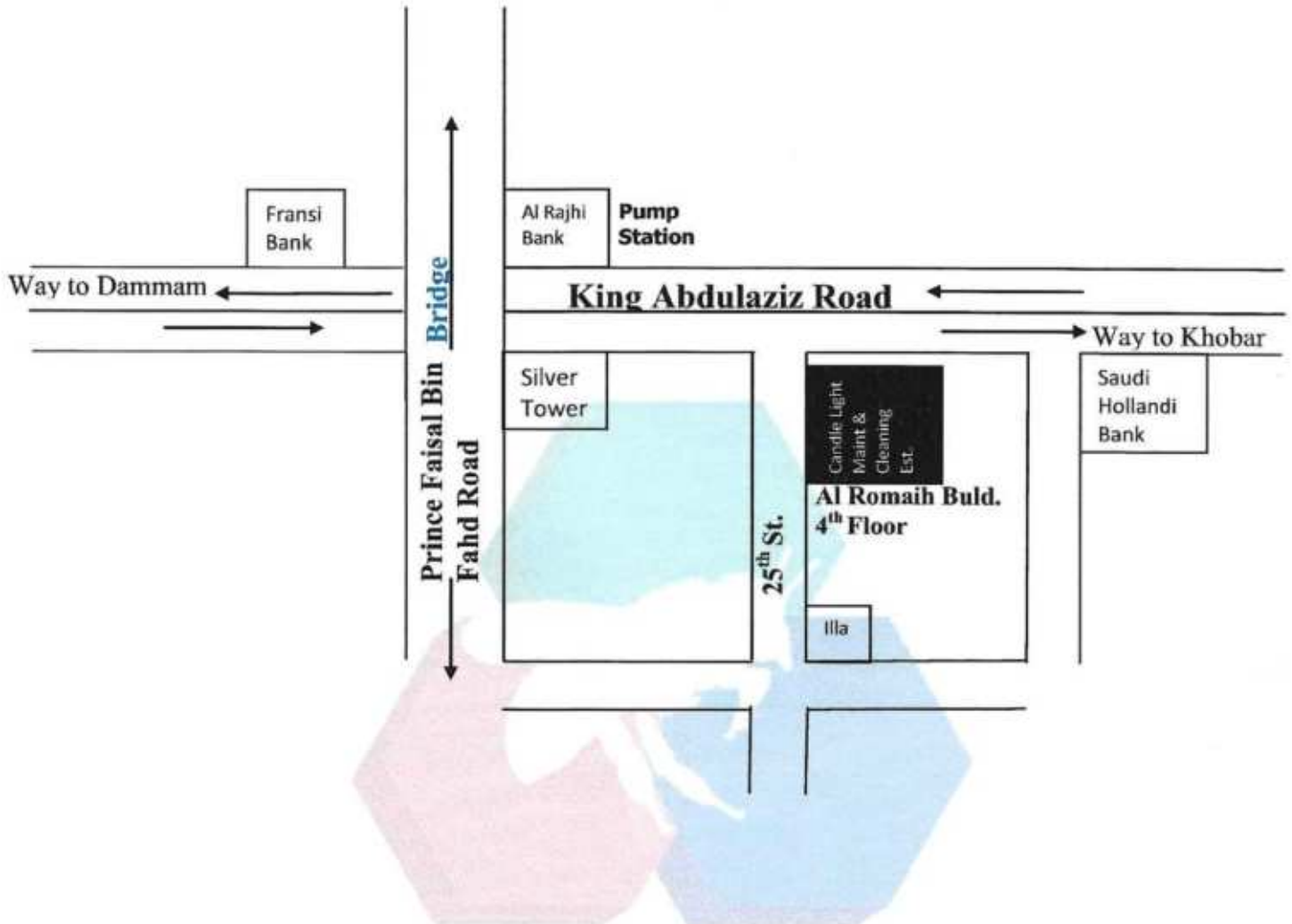
This proof has been issued upon the request of the above-named, and it is absolutely prohibited to imitate it or make any modifications to it, whether by addition or deletion, and the proof is considered void if it is marred by something, and its owner is subject to legal accountability.



# CANDLE LIGHT MAINT & CLEANING EST.

CLC Pest & Termite Control  
C.R. 2051035818

## Location Map:







# CERTIFICATE OF MEMBERSHIP

PRESENTED TO

**Candle Light Maint. & Cleaning Est For Pest & Termite Control**

MEMBER 2022-2023

Attested:

Dominique Stumpf, NPMA Chief Executive Officer

The National Pest Management Association (NPMA), a non-profit organization with more than 5,500 members from around the world, was established in 1933 to support the pest management industry's commitment to the protection of public health, food and property. This commitment is reflected both in the continuing education of pest management professionals and the dissemination of timely information to homeowners and businesses.